



COMMUNITY HEALTH PLAN
of Washington™
The power of community
INDIVIDUAL & FAMILY PLANS



Managing Joe's Type 2 Diabetes

Community Health Plan of Washington (CHPW)
Cascade Select Silver Plan

Services CHPW helps cover:



Doctor's office visits



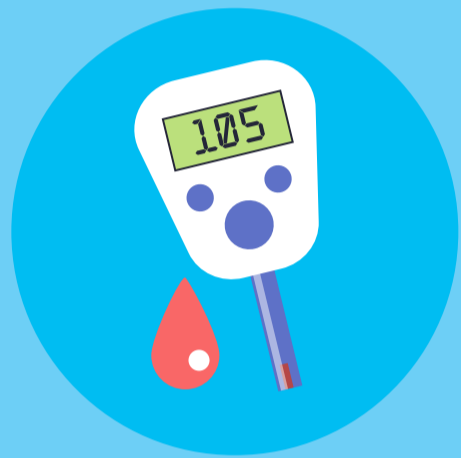
Diabetic care planning



In-clinic lab tests



Prescription drugs



Blood sugar monitoring equipment



How much will Joe have to pay?

Without insurance:



100%

With insurance:



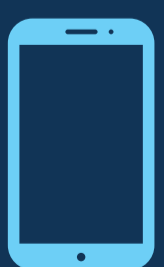
40%



With insurance, Joe pays less than half of what he would pay without it

(Per CMS cost calculator; page 6 in Doc 2/SBC Template Standard Format) For illustrative purposes only. Actual costs and savings vary depending on factors like age, income, blood work or regular blood tests.

Questions? A friendly CHPW team member can help explain your options.



1-833-993-0181
(TTY: 711)

8 a.m. - 5 p.m., Monday through Friday



individualandfamily.chpw.org